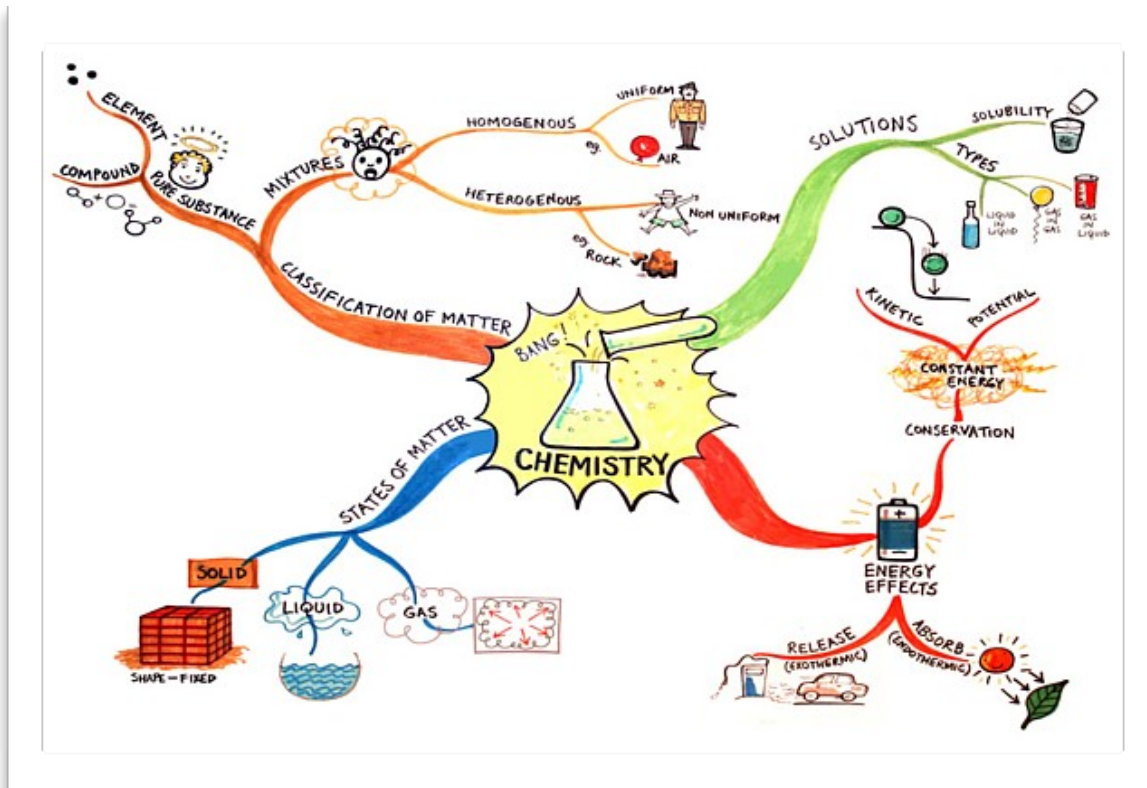


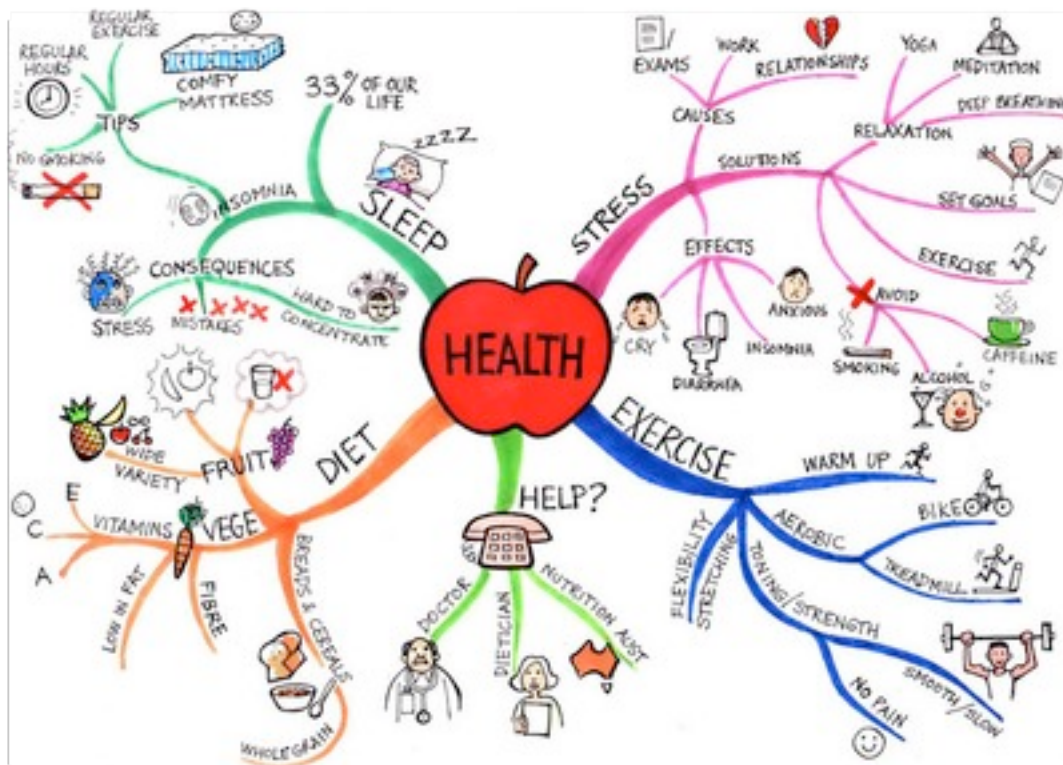
CHEMISTRY



HEALTH



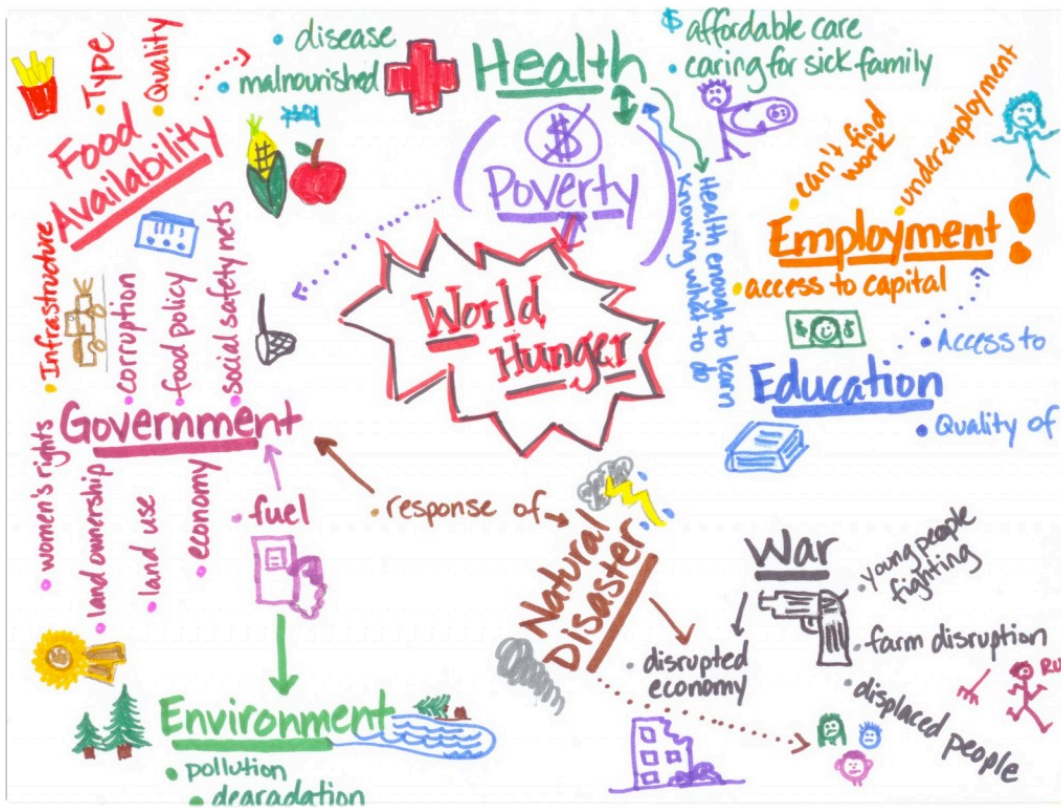
HEALTH



ART



CONTEMPORARY ISSUE



MATH

Mode = value that occurs most often. Eg. 7, 5, 3, 5, 4, 5
ans = 5

Median = The middle number. Eg. 1, 2, 3, 4, 5
ans = 3

Mode = $\frac{\text{Sum of Numbers}}{\text{Num of Numbers}}$
Eg. $\frac{4 + 5 + 7 + 9 + 10}{5} = \frac{35}{5} = 7$

The Range = largest value - smallest value
2, 5, 7, 9 = 9 - 2 = 7

Primary Data = Data you collect your self

Secondary Data = Data you look up in books, newspapers or the internet.

Data

Collecting Data

- Numerical: Numbers
 - Continuous
 - Discrete
- Categorical: Words
 - Ordinal

Presenting Data

- Bar chart
- Pie chart
- Histogram
- Stem & Leaf
- Tally chart

Statistics

Bar chart
Eg.

Pie chart
Sector

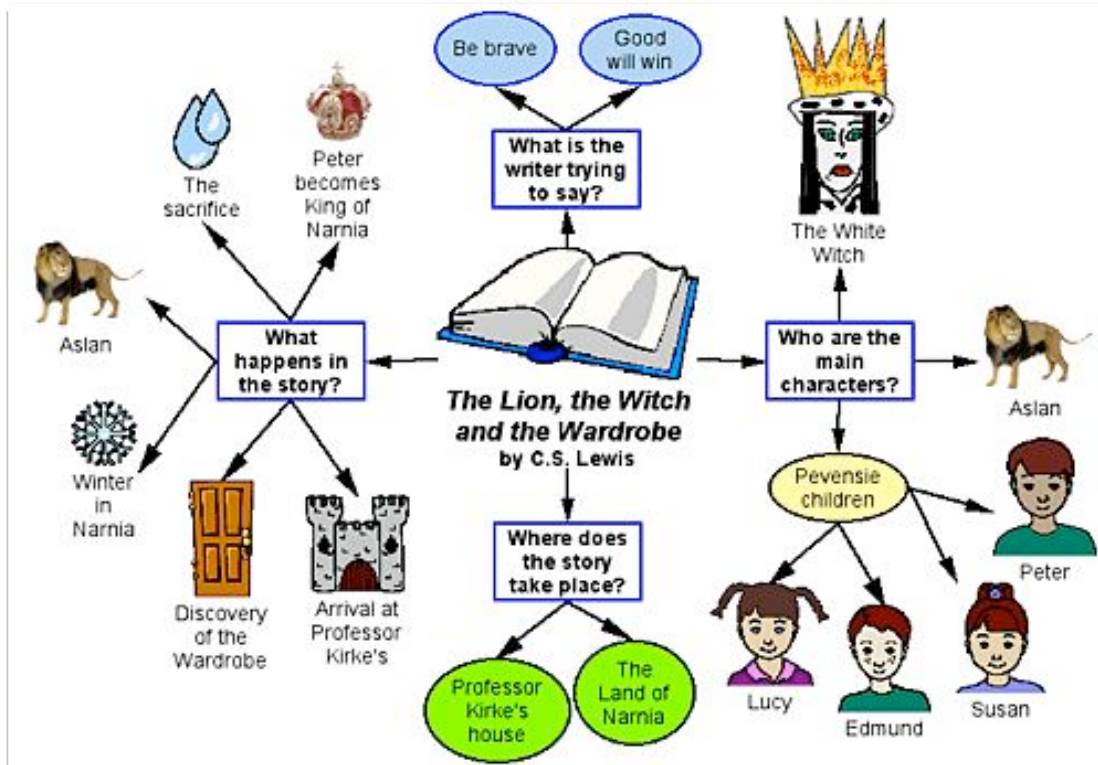
Histogram
Like a bar chart with no spaces.
Eg.

Stem & Leaf
Eg.

Tally chart
Eg.

Type	Tally	How many
Bus		4
Car		5
Van		3
Loopy		4

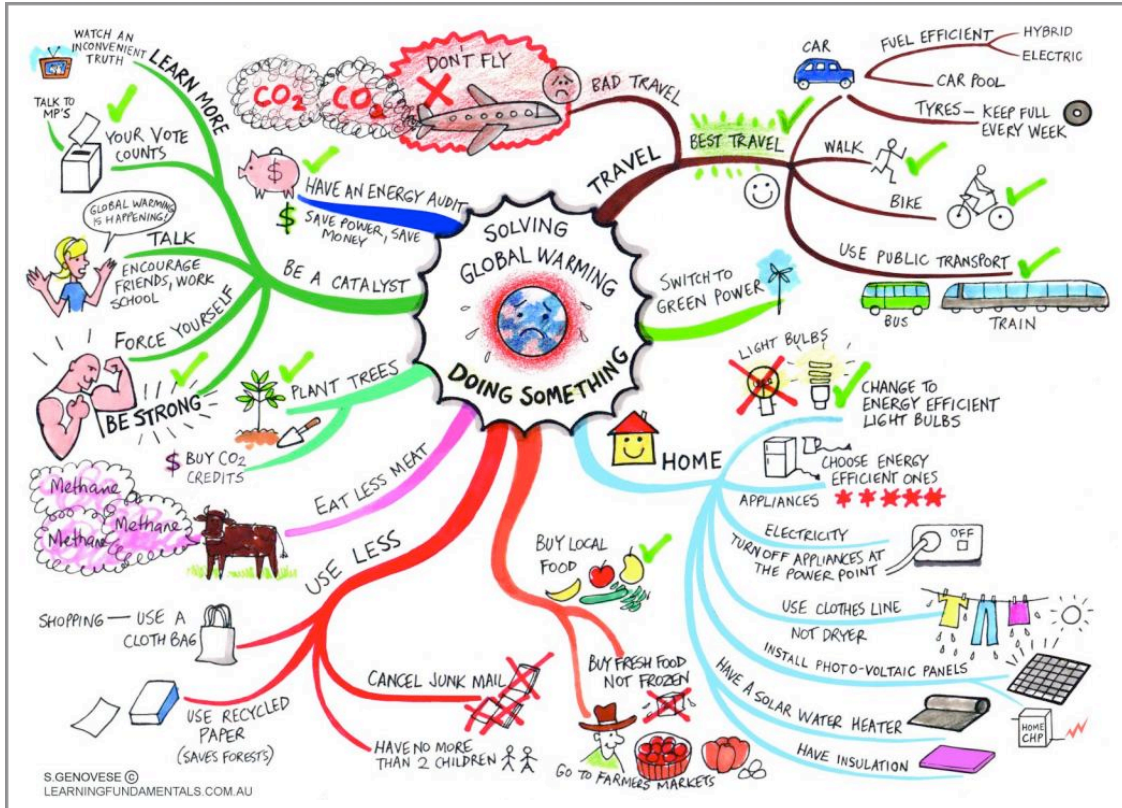
ENGLISH



SCIENCE



TAKE ACTION



YOUR CLASSROOM?

IDEAS

A large empty rectangular box intended for students to write down their ideas for classroom actions.